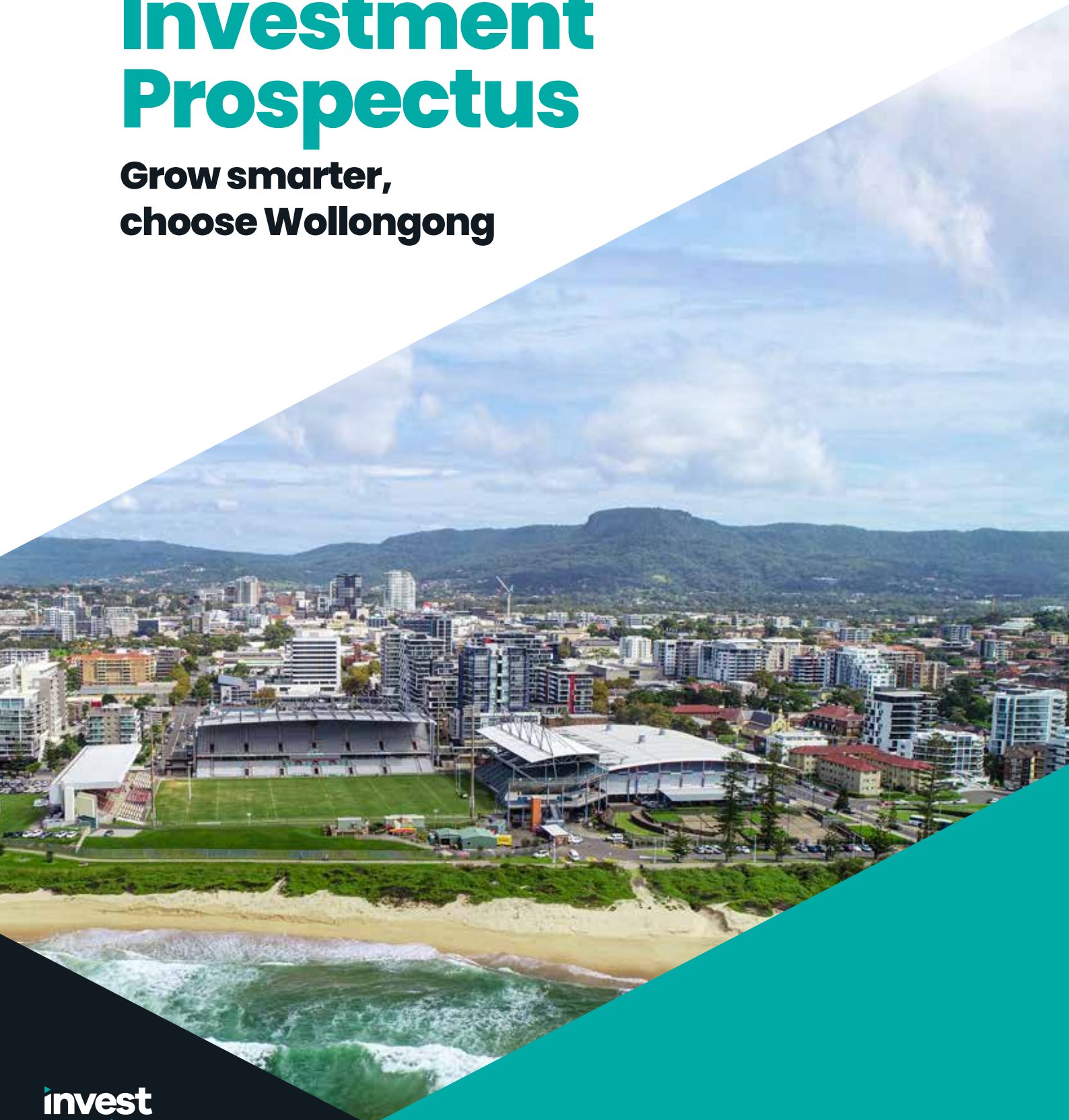


**2026 Wollongong**

# **Investment Prospectus**

**Grow smarter,  
choose Wollongong**



**invest  
wollongong**





## A message from the Lord Mayor

Welcome to Wollongong, a city proudly situated on Dharawal country, and building momentum like never before. Recent population projections indicate the Illawarra Shoalhaven will be the fastest growing region in NSW and it's no surprise why.

Wollongong offers a rare blend of opportunity and balance – with metropolitan amenities without the big city costs, where commutes are shorter, where businesses thrive and people build truly satisfying lives. Increasingly, we're seeing businesses take advantage of these opportunities and choosing Wollongong.

Wollongong City Council is proud to support the growth of our diverse, resilient economy that fosters innovation and growth, attracts investment and supports a thriving business community.

This is showcased in our recently endorsed Economic Development Strategy 2025–35, which sets out a ten year economic vision for our city that continues the momentum and transformation Wollongong has experienced.

The strategy also sets a jobs target of 20,500 net new jobs by 2035, as well as five strategic priority areas that will shape Wollongong's economic development over the next decade.

Wollongong's CBD also continues its transformation, with \$1.5B in investment over the past decade, and an additional \$1.3B in mixed use, residential and commercial projects in the pipeline. Wollongong is cementing its position as a dynamic city for growth, investment and wellbeing.

There's something special happening here – a momentum fuelled by collaboration and ambition. Whether you're looking to invest, start a business, or relocate, Wollongong is ready to welcome you. Together we're shaping a city where people and businesses can truly thrive.

**Lord Mayor of Wollongong  
Councillor Tania Brown**

## Contents

<b>Wollongong: the regional capital of the Illawarra Shoalhaven</b>	<b>4</b>
Wollongong economic snapshot	5
<b>Grow smarter, choose Wollongong</b>	<b>6</b>
Large, skilled talent pool	6
Proximity to Sydney	6
More cost effective	7
Supportive business ecosystem	7
A world class university with local impact and global reach	8
A lifestyle worth moving for	9
<b>Momentum in Wollongong</b>	<b>10</b>
A clear vision for growth	10
BlueScope's industrial land transformation as big as Sydney CBD	11
Growth of Wollongong's CBD	12
A-grade developments in the pipeline	13
Tourism economy transformation	14
A thriving cultural visitor experience	15
<b>Key sectors: Diversifying Wollongong's economy</b>	<b>16</b>
Tech	17
Clean Energy	18
Professional Services	20
Entrepreneurs, start-ups and scale-ups	21
Advanced Manufacturing	22
Creative industries	23

Image: Sea Cliff Bridge

# Wollongong is the regional capital of the Illawarra Shoalhaven region

Wollongong is experiencing strong economic growth, population expansion, and a pipeline of transformative infrastructure. It's a city of opportunity and balance, where smart growth, prosperity, and environmental responsibility guide progress.

## The Illawarra Shoalhaven is the fastest growing region in NSW, with an extra 130,000 people by 2041<sup>1</sup>

Wollongong has a workforce of more than 700,000 people within a one-hour commute. The region's population is expected to grow by 130,000 new residents by 2041, with increasing demand for more local employment opportunities.

## A city that prioritises growth and prosperity

Wollongong has set an ambitious jobs target of 20,500 net new jobs by 2035 as part of the Economic Development Strategy endorsed by Council in December 2025.

## Strategically located for growth

Wollongong offers proximity without the drawbacks. Just 70 minutes from two major

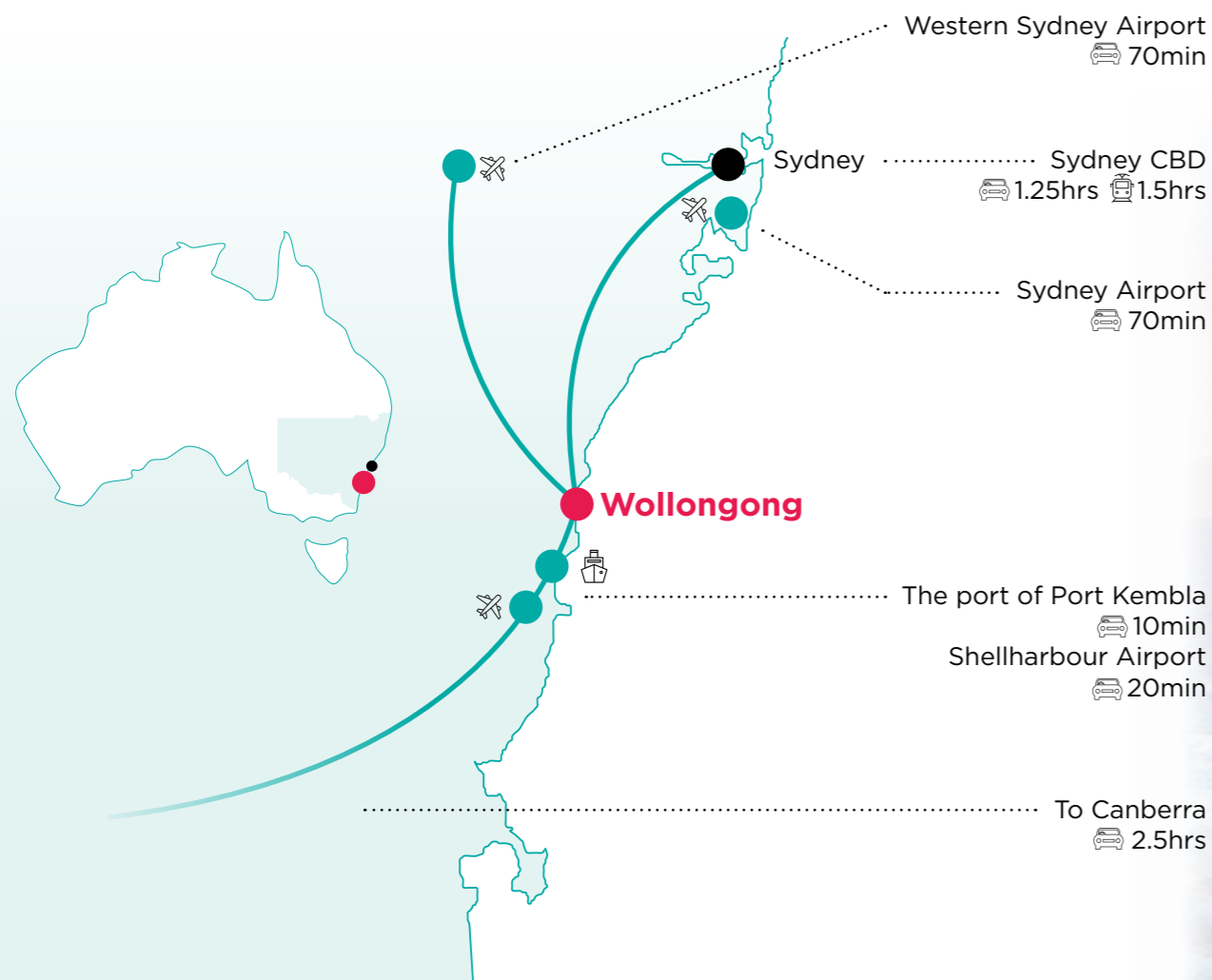
international airports, direct connections to Sydney CBD, dedicated cargo rail and port facilities, Wollongong provides the accessibility of a major metropolitan area but with space and support to grow.

## An industrial land transformation as big as Sydney CBD

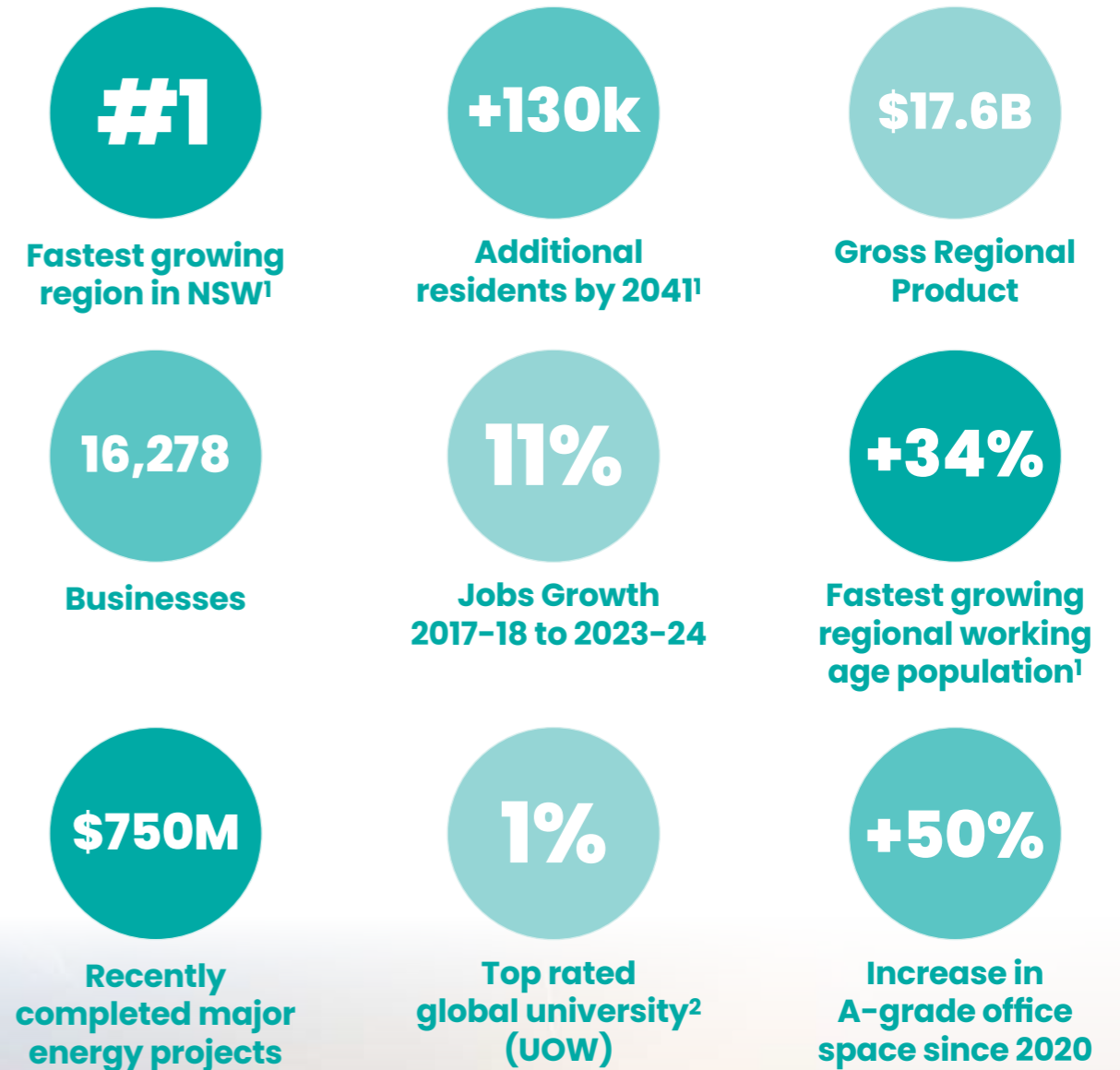
BlueScope's proposal to rezone 200 hectares of non operational land adjacent to the Port Kembla Steelworks has been approved.

## A flourishing entrepreneurial scene

Wollongong's supportive business ecosystem is attracting a growing number of entrepreneurs with a global footprint, a growing tech hub, and rapid developments in clean energy.



## Wollongong economic snapshot



<sup>1</sup> Projected by 2041, NSW Population Projections, Department of Planning, Housing and Infrastructure, Nov 2024

<sup>2</sup> QS World university Rankings 2025



Image: Wollongong Harbour

# Grow smarter, choose Wollongong

Wollongong is the perfect location to scale your business and attract top talent, without the big-city grind.

Whether you're establishing a new HQ, launching a start-up, or seeking better balance, Wollongong offers the ideal mix of opportunity, affordability, and lifestyle.



## Large, skilled talent pool

More than 700,000 working adults within a one-hour commute of Wollongong CBD.

The Illawarra Shoalhaven is projected to have the highest growth in working age population in NSW by 2041\*. Wollongong has a large, experienced workforce whose skills range from advanced manufacturing expertise, professional services, creative industries and digital technology based capabilities.

### Top 5 regions of NSW for projected growth in working age population

Region	2021	2041	Change %
Illawarra Shoalhaven (Wollongong)	259,468	346,624	34%
Greater Sydney	3,294,397	4,096,326	24%
Hunter	474,820	575,388	21%
Central Coast	209,061	239,674	15%
Riverina	170,910	192,927	13%

\*Source: Nov 2024 Population Projections, NSW Department of Planning, Housing and Infrastructure



## Proximity to Sydney

Wollongong is strategically located just over one hour from Sydney and major airports.

A unique advantage for businesses with national and international reach.

- 70 mins from Sydney and new Western Sydney Airports
- 2.5 hrs from Canberra
- 20 mins from Shellharbour airport with flights to Brisbane and Melbourne



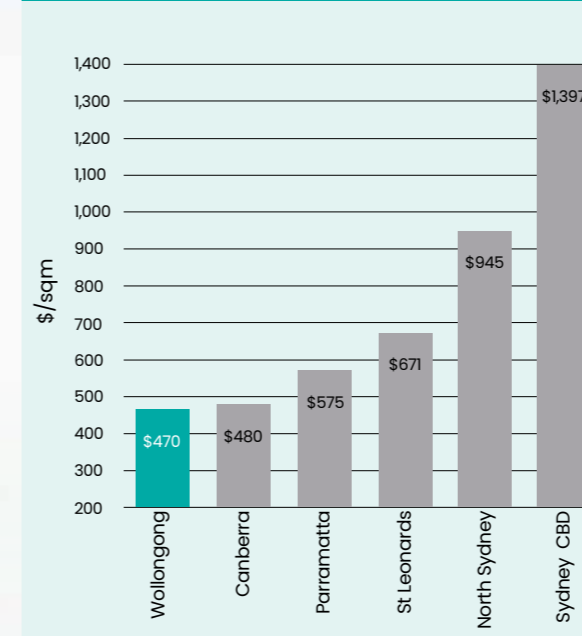
Image: Shellharbour Airport



## More cost effective

Wollongong's office space is more than 65% cheaper than the Sydney CBD and 50% cheaper than North Sydney.

### Average Prime Grade Net Face Rents



Source: Knight Frank 2026.

\*Prime grade rents within each selected market.



## Supportive business ecosystem

Wollongong boasts a uniquely collaborative business ecosystem with engaged networks.

### Business Support

Wollongong offers a full range of professional services, including legal, accounting, HR, marketing, and IT, alongside government initiatives that encourage business development and investment.

### Network Support

Wollongong's strong professional networks and regular business events provide opportunities to learn, connect, and grow, helping new businesses integrate quickly.

### Industry networks and peak bodies:

- Business Illawarra
- Destination Wollongong (Tourism)
- i3net (Industry)
- RDA Illawarra Shoalhaven
- Property Council of Australia
- Siligong Valley (Tech)
- Screen Illawarra (Film & TV)
- UDIA

Image: Mount Keira lookout



## A world-class university with local impact and global reach

The University of Wollongong (UOW) is among the top 1% of universities globally.

UOW is distinguished for the quality and impact of its education, research, industry and community engagement.

**University graduates are highly rated by employers.** UOW graduates are among the most highly rated in the country, ranking 1st in Australia for foundation skills in the latest 2024 QILT Employer Satisfaction Survey. With top-tier results across adaptive and technical skills, UOW remains the only Australian university to place in the top five for employer satisfaction for seven consecutive years.



**World class talent pipeline.** UOW produces a steady pipeline of world-class skilled talent.

### UOW Graduate Numbers (2025)

Faculty	Undergraduate	Postgraduate	Total
Business and Law	682	933	1,615
Engineering and Information Sciences	531	825	1,356
Science, Medicine and Health	1,029	317	1,346
Arts, Social Sciences and Humanities	1,144	705	1,849
UOW College	244	0	244
<b>Total</b>	<b>3,630</b>	<b>2,780</b>	<b>6,410</b>

\*Completions to date as at 8 December 2025 – not final figures

As a global research leader, **UOW maintains 280+ research collaborations across more than 45 countries.** This global network is underpinned by over 400 international agreements that facilitate teaching, credit transfer and offshore delivery. Locally and abroad, UOW remains a partner of choice for industry, with more than 150 companies and government institutions collaborating on commercial research projects.

**UOW's Innovation Campus** in North Wollongong is home to research institutions and a well-established community of innovative multinational and national companies.

**iAccelerate**, located within the precinct, fosters a thriving pipeline of entrepreneurs and start-ups, helping to commercialise ideas, create new jobs and strengthen the regional economy.

#### UOW core capabilities include:

- Clean energy systems and technologies
- Molecular, life and health sciences, including biomedical engineering, medical device innovation, and nuclear medicine
- Health workforce development, including medical education, nursing, and aged, community and palliative care
- Advanced materials and defence technologies
- Innovation and entrepreneurship
- Education, teaching and early childhood development
- Sustainable built environments
- Cybersecurity and cryptology
- Ocean governance, maritime security and blue economy development

#### Leading the clean energy transformation

UOW is developing the Energy Futures Skills Centre to help industry build the skills for Australia's clean energy transformation. Supported by \$10M from the Australian Government, key elements of the initiative include new training programs by UOW and TAFE NSW, along with clean energy and low-emissions manufacturing teaching laboratories.

A major public-facing component is the Energy Futures Zone at UOW's Science Space, launched in November 2025. This interactive hub is dedicated to increasing public awareness of the potential of clean energy, helping visitors and industry alike imagine a more sustainable industrial future for the region.



Image: University of Wollongong



## A lifestyle worth moving for

**Businesses in Wollongong tend to enjoy lower staff turnover due to Wollongong's exceptional lifestyle.**

**Less time commuting for higher quality downtime:** Most residents can access work, education and recreation within 20-30 minutes, supported by shorter commutes and a growing cycleway network. This means happier, healthier, and more productive teams. With significant construction of new apartments in the Wollongong CBD, more people will have the opportunity to be close enough to work to walk or cycle.

**World-class infrastructure and institutions:** The city is home to a major teaching hospital, private healthcare options, 89 quality schools, TAFE, and a top ranked university, ensuring access to top tier services and education for the whole family.

**Ultimate lifestyle opportunities:** from spotting quokkas at Symbio Zoo to firefly gazing on the escarpment, dining at family-friendly venues, or taking a swim at one of our 17 patrolled world-class beaches, lifestyle in Wollongong is what you make it.



### Kembla Mountain Bike Trails, opened September 2025

Stage one of the \$13.4M Illawarra Escarpment Mountain Bike Network has officially opened, providing 20 kilometres of purpose-built trails that weave through pockets of rainforest with epic ocean views.

Part of a planned 70 km network, it's an initiative by the NSW National Parks and Wildlife Service and Wollongong City Council, in collaboration with the community.



Image: Kembla Mountain Bike Trails

# Momentum in Wollongong

## A clear vision for growth

In December 2025, the city endorsed a new 10-year Economic Development Strategy.

Aimed at building a diverse, resilient economy that attracts investment, fosters innovation, and supports a thriving business community. The strategy aims to continue the growth trajectory with a target of 20,500 additional jobs by 2035 - double the target set in the 2019 Strategy, achieved 4 years ahead of schedule.



The strategy identified 10 momentum building projects which have the potential to unlock new employment opportunities, enhance infrastructure, enable housing supply for Wollongong:

- 1 The BlueScope Port Kembla Land Transformation Project
- 2 Continuing Wollongong CBD's transformation
- 3 Critical transport projects to reduce the travel time and improve resilience between Wollongong and the Sydney basin
- 4 Capitalise on the opportunities associated with the South West growth corridor and the Western Sydney Aerotropolis including the opening of the new Western Sydney International Airport in 2026
- 5 The ongoing development of the port of Port Kembla through a range of infrastructure
- 6 The ongoing development of the Clean Energy sector, including the Illawarra Urban Renewable Energy Zone and the Port Kembla Hydrogen Hub
- 7 Attraction of more major events and tourism infrastructure, including new hotel supply
- 8 Development of unused and under-utilised employment lands to unlock additional industrial land supply
- 9 Advocate for infrastructure requirements to unlock housing supply in West Lake Illawarra Urban Release Area
- 10 Build the capacity to advocate on behalf of the city and the region



Image: Lang's Corner, Wollongong CBD

## BlueScope's industrial land transformation as big as Sydney CBD

BlueScope's proposal to rezone 200 hectares of non-operational industrial land adjacent to the Port Kembla Steelworks was approved in December 2025.

The rezoning is possibly the most significant change to the region since steelmaking began nearly 100 years ago.

Previously limited to heavy industrial activities associated with steelmaking, the new Special Purpose zoning opens the door to education precincts, technology hubs, creative industries, recreation areas, and supporting commercial and community infrastructure, with potential to create 20,000 new jobs.

### Exclusive agreement between BlueScope and Sicona Battery Technologies

An Exclusivity Arrangement has been entered into between BlueScope and Sicona Battery Technologies, a leading battery technology start-up born out of the University of Wollongong's incubator, iAccelerate. This will help accelerate Sicona's plans to construct a flagship demonstration plant for advanced battery-materials manufacturing.

### \$2B pipeline of Major Projects in the region

As the Port Kembla Steelworks approaches its 100-year anniversary in 2028, BlueScope has a vision for a low-emissions iron and steelmaking future. BlueScope has approved over \$2B worth of major manufacturing projects that will deliver significant investment and growth in domestic manufacturing and product and service innovation.

### Next steps:

Work will continue on more detailed precinct plans with potential for applications to proceed for certain types of developments from 2026.



Image: artist impression - BlueScope Port Kembla Land Transformation Project

## Growth of Wollongong's CBD

Wollongong's CBD is transforming into a thriving hub for growth.

With new jobs, economic activity, and housing, the CBD is the region's largest employment centre, home to 28,000 workers and 30% of local jobs. It's now a thriving base for technology, financial services, professional firms, and start-ups serving local and global markets.

### Attracting investment and new players

Nearly half (44%) of all new office leases in the past four years were businesses new to Wollongong (Colliers Wollongong, 2025).

**\$1.5B**

CBD investment over the last 10 years

**+50%**

Increase in A-grade office space since 2020, with another 47,000sqm in the pipeline

**+\$1.3B**

Project pipeline incl. mixed use, residential and commercial infrastructure

### CBD office stock grade

	2020	2026	% change
A-Grade	57,329	87,660	53%
B-Grade	42,830	43,080	5%
C-Grade	47,418	41,060	-13%
D-Grade	4,641	4,641	0%
<b>Total Stock</b>	<b>152,218</b>	<b>178,441</b>	<b>17%</b>

### CBD transformational projects include:

- Delivery of the Wollongong Health Precinct
- Advocacy for relocation of state and federal government agencies
- The redevelopment of the Illawarra Sports and Entertainment Precinct
- Establishment of a new state government workplace hub
- Delivery of the Wollongong Station Precinct Master Plan
- Delivery of the Wollongong Harbour Master Plan
- Continue to support growth in inner city living in the Wollongong CBD
- Establishment of a city centre university presence

Image: Black Cockatoo

## A-grade developments in the pipeline



### The Quarters on Crown - 72 Crown Street

**DA approved A-grade office building;**

- 10,000+ sqm of contiguous space
- Floorplates ranging from 1,034 sqm - 1,581 sqm
- Secure basement parking
- Flexible fit out options
- Now seeking pre commitment leasing



### Crown Square

**This State Significant Development proposal includes:**

- 546 apartments
- A 166 key hotel
- A 10-storey commercial tower with 7,200 sqm of office space
- 2,800 sqm of additional non-retail commercial space

### 111-119 Crown Street

**Under construction, A-grade office building;**

- 12 storeys
- 10,089sqm of commercial/ office space
- Ground floor shop front
- Now seeking pre commitment leasing



## Tourism economy transformation

Wollongong's visitor economy is gaining momentum through landmark projects and strategic initiatives that will reshape the city's tourism offering and attract new markets.



### The Globe: A 430+ room hotel/motel and commercial office development

The Globe is a transformative project spanning two city blocks in the heart of Wollongong CBD.

Following Council endorsement in late 2025, a planning proposal seeks to increase the scale of the development, with plans to allow for:

- 13,000 m<sup>2</sup> of commercial office space
- 262-room hotel
- 172-room motel

With over 430 accommodation rooms proposed, The Globe could significantly boost Wollongong's accommodation capacity and support longer stays.



### Wollongong is advocating to be the home of NSW's third cruise terminal

Wollongong and surrounding regions are championing Port Kembla as NSW's third cruise terminal and turnaround port.

The Cruise Wollongong Prospectus makes a compelling case, highlighting:

- A deep-water port with rail and road connectivity
- Proximity to Sydney and major airports (Mascot, Shellharbour, Western Sydney)

Thriving regional city with a highly attractive visitor experience. This initiative positions Wollongong as a future major cruise gateway, unlocking long-term economic opportunities for the region.



Image: Wollongong Lighthouse

## A thriving cultural visitor experience

Wollongong's fast-growing inner-city population is fuelling a vibrant arts, culture and hospitality scene.

The CBD now hosts more than 180 small bars, cafes and restaurants, helping power a thriving arts and evening economy that attracts residents, visitors and major events.

Wollongong's cultural momentum is gaining national recognition with Merrigong Theatre Company named Performing Arts Centre of the Year at the 2025 PAC Australia IMPACT Awards.



### Wollongong Art Gallery

One of the largest regional art museums in Australia with a collection of more than 3,500 works, and showcases diverse exhibitions, a range of public programs and events.

The Wollongong Art Prize 2025 received a record-breaking 1,200+ entries with a \$32,000 prize pool.



### Music & film festivals

Wollongong continues to attract a number of large music festivals including the annual, homegrown Yours and Owls festival and locally, the Thirroul Music Fest, Open Streets, and the 'Tune In' events.

'Over, or how to save the world', the winner of the Creative Wollongong Short Film Festival has gone on to conquer the world in Canberra, Flickerfest, Nevada, and LA.



### Sport events

Wollongong has recently been the host city for major events such as the 2025 World Triathlon, the 2025 NBL Championship finals and the 2022 UCI Road World Championships. These events help showcase Wollongong on a national and global stage.



Image: Wollongong Botanic Garden, Sculpture in the Garden exhibition 2025

# Key sectors: Diversifying Wollongong's economy

Wollongong's story is one of evolution and momentum. Proudly built on its 'steel city' foundations, the region has developed a resilient, skilled and innovative workforce.

Advanced manufacturing remains a strong part of our DNA, but today Wollongong's greatest opportunities come from a dynamic and intentionally diversified economy.

**Explore case studies and the opportunities shaping Wollongong's future.**



Image: Hysata, Port Kembla

## A dynamic tech hub driving national and global impact

Wollongong is home to a dynamic tech sector with successful companies serving national and international markets.

The city's established expertise in technology and strong pool of highly educated ICT professionals make it an ideal hub for tech businesses to innovate, grow, and thrive.

**At the heart of Wollongong's tech community is Siligong Valley**, a network of almost 1,800 tech professionals, entrepreneurs, and digital marketers to connect and scale. By fostering collaboration and showcasing local talent, the network is cementing Wollongong's place on the global tech map.



Image: Scalapay

### Case study: Scalapay

**'Unicorn' buy now pay later fintech founded in 2019 by Johnny Mitrevski and Simone Mancini.**

Named a 'unicorn' valued at over \$1.9B in 2022, Scalapay services 8 million customers across Europe and employs 220 staff globally.

With their technology headquartered in Wollongong, Scalapay is a magnet for tech talent in the region and is dedicated to the ongoing growth of the sector.

**"Engineering is in Wollongong's DNA, you can really see that mindset in the talent here"** Johnny Mitrevski

#### DevOpsDays Tech Conference host city

In 2025, Wollongong hosted DevOpsDays, part of a global series of technology conferences. The event brought together 100+ of Australia's leading tech minds to debate AI, explore highly technical systems and discuss tech topics. With keynote speakers and industry experts, DevOpsDays Wollongong positioned the city as a hub for innovation and collaboration in the fast-evolving tech landscape.



Image: DevOpsDays Wollongong 'open spaces' tech discussions

## Clean energy

Wollongong is emerging as a global clean energy hub, with major projects in green hydrogen production, dual fuel power generation, and gas infrastructure, transforming the regions energy eco-system.

**\$750M in major projects have reshaped the region's energy ecosystem:**

- **EnergyAustralia** Tallawarra A upgrade and Tallawarra B construction created Australia's first dual fuel capable power stations.
- **Squadron Energy's** Port Kembla Energy Terminal is Australia's first regasification facility to support domestic gas supply.
- **Jemena** Port Kembla Pipeline Duplication + Eastern Gas Pipeline upgrades have increased network capacity to east coast gas markets.
- **BlueScope** upgraded capabilities to produce wind farm and solar farm components.

## Illawarra Urban Renewable Energy Zone (REZ)

Announced in 2023, the Illawarra Urban REZ has a focus on creating a local energy hub that connects large scale solar generation with grid scale battery storage. Endeavour Energy has released plans for a \$150M battery energy storage system located at the Unanderra substation to leverage existing electricity infrastructure.

### New Clean Energy Initiatives

**Hysata:** Manufacturing innovative hydrogen electrolyser technology at Port Kembla.

**Green Gravity:** Constructed a trial facility to test a unique gravitational energy storage system.

**Sicona:** Establishing a new facility at Port Kembla to produce more efficient battery materials.

**BOC:** Proposed 10 MW electrolyser at Port Kembla to initially produce green hydrogen to power zero emissions buses and trucks.

**ATCO:** Awarded ARENA funding to explore the feasibility of establishing a 1 GW hydrogen facility under the German-Australian HyGATE initiative.

### Port Kembla Advantage

As NSW's largest motor vehicle import hub and future container terminal, Port Kembla is positioned to support clean energy supply chains and growing freight demand.



Image: Coregas, manufacturing and supplying hydrogen for over 30 years



Image: Paul Barrett, Hysata CEO

### Case study:

## Hysata

### Redefining green hydrogen production

Hysata is commercialising an ultra-efficient capillary-fed alkaline electrolyser to deliver the lowest-cost green hydrogen. This breakthrough technology supports decarbonisation of hard-to-abate sectors such as steel, chemicals and heavy transport. Recognised by TIME and Statista as being among the world's Top GreenTech companies, Hysata employs over 110 people in Wollongong.

In 2024, they raised US\$111.3M in Australia's largest-ever Series B clean tech funding to expand its Wollongong facility and scale production. Hysata also recently secured collaboration agreements with ACWA Power and POSCO Holdings, cementing its role in the global shift to green hydrogen.

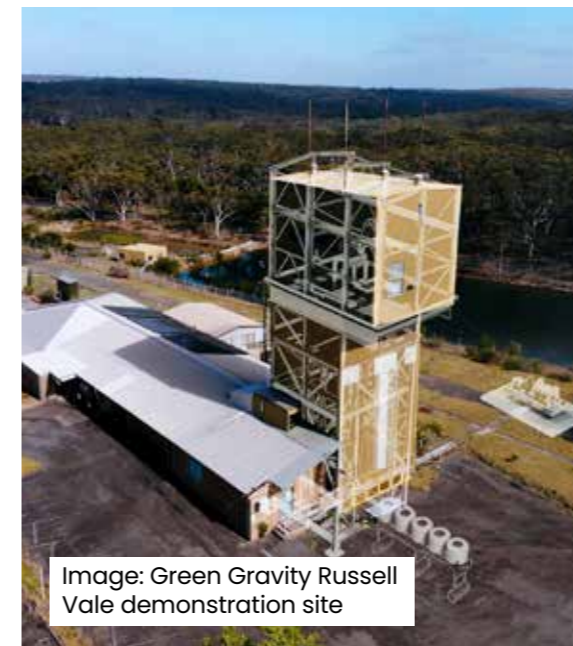


Image: Green Gravity Russell Vale demonstration site

### Case study:

## Green Gravity

### Repurposing mines to store renewable energy

Green Gravity has developed innovative technology that repurposes disused mineshafts to store renewable energy. Their Gravitational Energy Storage System (GESS) converts gravitational energy into electricity, offering a cost-effective solution for long-duration renewable energy storage. Green Gravity, leverages Wollongong's pipeline of skilled engineers, and UOW graduates to drive innovation and expansion.

Collaborating with national and global partners, they are scaling their impact with a Series A capital raise of ~AUD\$9M from investors including Blue Scope X, HMC Capital, Pacific Channel, and Sumitomo Corporation, and a demonstration project well underway for the world's first full-scale deployment of GESS technology at a local Wollongong coal mine. The project highlights how legacy mines can be transformed into clean energy infrastructure for mining regions like the Illawarra.



Image: Sicona R&D Facility

### Case study:

## Sicona Battery Technologies

### Smarter Lithium-ion batteries

Sicona develops next-generation silicon-carbon (SiC<sub>x</sub>) anode materials for lithium-ion batteries, delivering 20%+ higher energy density and faster charging than conventional graphite.

In 2025, Sicona secured a \$15M strategic investment and global licensing agreement with Himadri Speciality Chemical Ltd., alongside \$1.6M in NSW Government funding to scale its graphene-based coolant technology that could reduce energy use in electric vehicles and data centres by over 50%.

Sicona has entered into an Exclusivity Agreement with BlueScope to explore locating its flagship demonstration plant for advanced battery materials manufacturing within the Port Kembla precinct.

## Professional Services

Wollongong is a dynamic and growing hub for professional services, offering a compelling alternative to major capital cities.

Businesses based in Wollongong benefit from a highly skilled workforce, supportive business environment and seamless connectivity to national and international markets. Not to mention, higher retention rates thanks to a great lifestyle outside work.

**KPMG:** consulting services have had a thriving Wollongong office for over 50 years.

**Peoplecare Health Insurance:** headquartered in Wollongong since 1952 and services national and global markets.

**Stantec Engineering** have offices in 19 countries and have been in Wollongong since 1970.



### Case study: GHD Engineering

A global, employee-owned firm providing engineering and other professional services, GHD has had a Wollongong office since 2006. Two years ago, they upgraded and expanded their footprint as it was outgrowing its old space.

GHD's new Wollongong office comprises more than 50 professionals that mirror the region's traits; renewable energy, mechanical, electrical, mining, geotechnical, rail, water, civil and structural engineers, environmental scientists and project

managers who deliver projects locally, regionally, nationally and globally from Wollongong.

**"We have great levels of engagement and enthusiasm amongst staff. The Illawarra region's potential to be a leading renewable energy and world-class manufacturing hub is a huge strength, and the University of Wollongong and TAFE NSW's Wollongong campus ensures there is a rich talent pool to drive growth in these sectors."**  
Peter Chudleigh, Regional Leader South Coast NSW, GHD.



Image: GHD Engineering new office

## Entrepreneurs, start-ups and scale-ups

Wollongong is a sought-after destination for entrepreneurs to grow their businesses in a supportive, innovative community. Entrepreneurs choose Wollongong for its high potency of skilled talent and lower barriers to entry.

### iAccelerate is attracting more entrepreneurs to Wollongong.

Celebrating their 10th anniversary at the UOW Innovation Campus in 2026, iAccelerate is one of Australia's largest and longest running incubators and accelerators. They provide affordable and accessible support for start-ups and scale-ups at any level of development. iAccelerate has been recognised globally for Female Empowerment in Entrepreneurship at the recent ACEEU Triple E Awards.

Leveraging top tier university research, future workforce and world class facilities, iAccelerate offers education, mentorship, business connections and the skills to build your business from Wollongong.

### Key achievements since 2016:



Image: V-DAQ

### Case study: V-DAQ

Founded by Paul Fenech and Rylan Kolb during their final year of Mechatronic Engineering at UOW, V-DAQ is a rapidly growing transport technology company providing transport operators greater fleet visibility, improved productivity, and a simplified approach to managing regulatory and compliance obligations.

Based entirely in Wollongong at the Innovation Campus, V-DAQ has built both its team and its proprietary technology locally. The company continues to create and support high growth career opportunities for top talent, including UOW students and alumni.

What truly sets V-DAQ apart is the strength of their technology and the commitment of their team. They are known for exceptional service delivery and for delivering reliable, industry leading solutions to more fleet operators across Australia.

V-DAQ's bootstrapped success is an inspiring example of what Wollongong founders can achieve. And for this ambitious company, it's only the beginning.



Image: UOW Innovation Campus

## Advanced Manufacturing

Manufacturing is part of Wollongong's DNA, with over 110 years of innovation and expertise.

The region hosts a diverse range of advanced and industrial manufacturing operations, with unique strengths in machinery, equipment design, and manufacturing that enable businesses to compete on a domestic and global scale. These capabilities are supported by a highly skilled workforce across design, engineering, research and development, fabrication, and quality assurance.

The University of Wollongong further amplifies the region's strengths, unlocking nationally significant research, facilities and expertise.

### \$47M TAFE investment to strengthen Wollongong's talent pipeline

Through a joint government investment, the Illawarra Heavy Industry Manufacturing Centre of Excellence at TAFE NSW Wollongong will deliver training in digital, electrical and robotic manufacturing to support Australia's clean-energy transition.

### Wollongong's growing defence procurement ecosystem:

Supported by the Shoalhaven's defence assets, Wollongong businesses offer diverse capabilities:

- Engineering design, project management
- Advanced welding and fabrication
- Armour plate steel
- Electrical isolators and enclosures
- Specialist protective coatings & blasting
- Ruggedised computers & communication
- Gearbox design, manufacture, servicing
- Cyber encryption capabilities

#### Did you know?

The armoured steel used in the Collins class submarines, Adelaide class frigates and the Hobart-class Air Warfare Destroyers projects was manufactured in Wollongong.

## Case study: BlueScope National Product, Processing & Solutions Hub – state of the art plate processing

The National Product, Processing & Solutions Hub provides end-to-end project management system of complex steel

processing, component manufacturing and steel kits ready for product assembly.

**Complex solutions:** The Hub supports customers with highly complex or significant projects in infrastructure, renewable energy, defence, transport, mining oil & gas, and agricultural industries.

BlueScope Distribution's new facility offers a **first-of-its-kind complex steel processing capability** right here in Wollongong, creating a range of import replacement capability.



Image: BlueScope Distribution

## A boom in creative industries

The Illawarra's natural beauty and skilled workforce have resulted in a booming local screen production industry, with 479 film permit applications in the last 5 years for increasingly larger productions.

The Illawarra was the backdrop for the Kingdom of the Planet of the Apes (2024) and The Beast in Me (2025)

### Screen Illawarra

Screen Illawarra is the local film body that builds and promotes the region's screen sector capabilities and has attracted several major film productions to the region. Screen Illawarra is working to attract the development of major production studios in Wollongong.

### Key Screen Illawarra Initiatives include:

- 400+ members
- Workshops and networking events
- Local and independent film screenings with Q&A's
- 3 members awarded at the 2024 AACTA's (the national film awards)
- Industry famil tours for national and international productions
- Film permit coordination to ensure opportunities for local cast, crew, locations and suppliers are maximised

### Screen Industry Familiarisation

In January 2025, Screen Illawarra invited senior execs from the biggest names in the screen industry to tour Wollongong and showcase the region's strengths and demand:

- Netflix
- The Walt Disney Company
- BBC Studios
- Warner Bros. Entertainment
- Screen Australia
- Screen NSW
- Ausfilm
- Screen Producers Australia

## Case study: BBC Studios and the Death in Paradise spin off 'Return to Paradise'

**Return to Paradise** is an Australian-British television series and an original spin-off series of the global smash-hit murder mystery franchise Death in Paradise. The series premiered on ABC and ABC iview in September 2024 and is produced by BBC Studios Productions Australia with Red Planet Pictures.

**Screen Illawarra** assisted the first season of Return to Paradise with general consultation during pre production, including locations support, and scouted suitable local extras.



Image: Return to Paradise, courtesy of BBC Studio Australia

# invest wollongong

Invest Wollongong is a strategic partnership focused on economic development.



**Our Goal:** Increase business investment and job creation by showcasing Wollongong's capabilities and empowering decision makers.

**How we can help:**



**Facilitate** - Connecting you with relevant industry networks, local agents and training and education opportunities. Facilitate bespoke site visits and meetings with key stakeholders.



**Promote** - Showcase Wollongong's capabilities as a superior business location among key decision makers.

**Invest Wollongong Corporate Partners:**



This publication was produced on Dharawal Country. We show our respect and acknowledge the Traditional Custodians of the Land, Elders past and present, and extend that respect to other Aboriginal and Torres Strait Islander people.

# invest wollongong